

# LBP-660

## PARTS CATALOG

REVISION 1

**Canon**

AUG. 1998

**RY8-31AK-010**

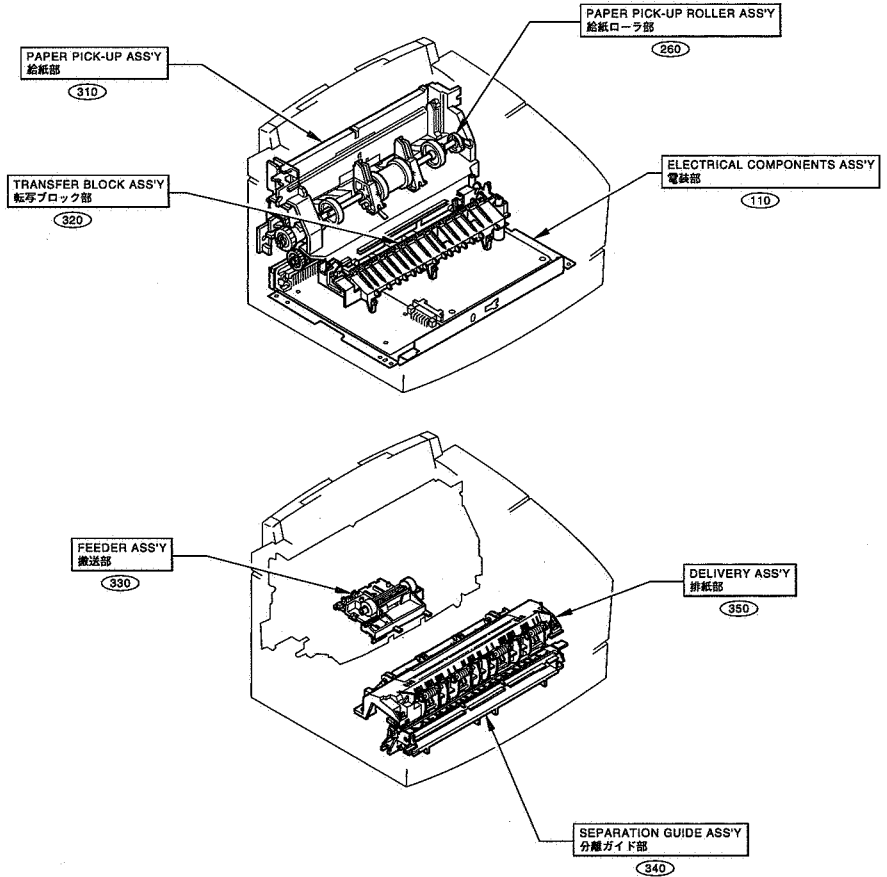
# LIST OF ORDER AND SERIAL NUMBERS

オーダーナンバー／シリアルナンバー一覧表

NAME	REMARKS	ORDER No.	SERIAL No.
LBP-660	100-120V 50/60Hz 600DPI	R72-5064-000	JHL00001-
		R72-5064-001	
	220-240V 60Hz 600DPI	R72-5058-000	KJE00001-
		R72-5058-006	
	220-240V 60Hz 600DPI	R72-5058-001	KJF00001-
		R72-5058-007	
	220-240V 60Hz 600DPI	R72-5058-002	KJG00001-
		R72-5058-008	
	220-240V 60Hz 600DPI	R72-5058-003	KJH00001-
		R72-5058-009	
	220-240V 60Hz 600DPI	R72-5058-004	KIJ00001-
		R72-5058-010	
	220-240V 60Hz 600DPI	R72-5058-005	KJL00001-
		R72-5058-011	
	100-120V 50/60Hz 600DPI	R72-5094-000	JHM00001-
		R72-5094-001	
	220-240V 60Hz 600DPI	R72-5068-000	KJK00001-
		R72-5068-001	

# FIGURE A

## ASSEMBLY LOCATION DIAGRAM 主要部品配置図



# FIGURE 001    DISK UNIT ディスクユニット

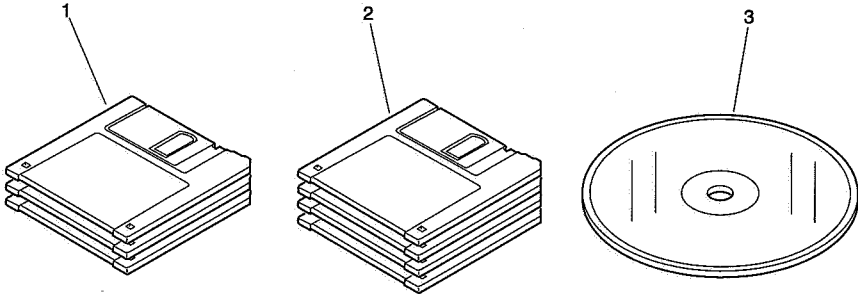


FIGURE & KEY NO.	PART NUMBER	RANK	QTY	DESCRIPTION	SERIAL NUMBER / REMARKS
001 -	NPN		RF	DISK UNIT	
1	RG1-3946-000		1	3.5"FD, PRINTER DRIVER (3/SET)	ENGLISH (DEFAULT A4)
	RG1-3746-000		1	3.5"FD, PRINTER DRIVER (3/SET)	ENGLISH (DEFAULT LTR)
	RG1-3948-000		1	3.5"FD, PRINTER DRIVER (3/SET)	GERMAN
	RG1-3949-000		1	3.5"FD, PRINTER DRIVER (3/SET)	FRENCH
2	RG1-3947-000		1	3.5"FD, PRINTER DRIVER (4/SET)	ENGLISH (DEFAULT A4)
	RG1-3945-000		1	3.5"FD, PRINTER DRIVER (4/SET)	ENGLISH (DEFAULT LTR)
	RG1-3950-000		1	3.5"FD, PRINTER DRIVER (4/SET)	CHINESE
	RG1-3951-000		1	3.5"FD, PRINTER DRIVER (4/SET)	TAIWANESE
3	RG1-3929-000		1	CD-ROM, PRINTER DRIVER	EUROPE
-----					
-----					
-----					

**FIGURE 100** EXTERNAL COVERS, PANELS, ETC.  
外装カバー

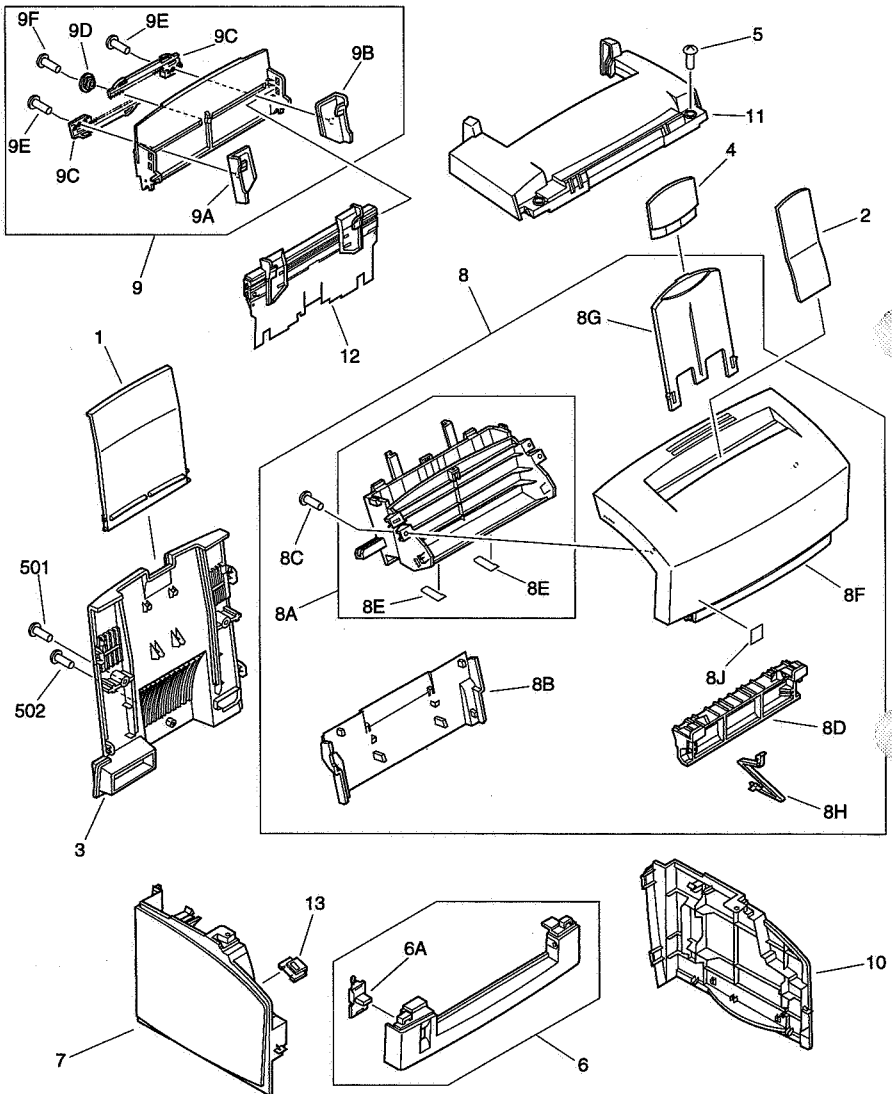


FIGURE & KEY NO.	PART NUMBER	RANK	QTY	DESCRIPTION	SERIAL NUMBER / REMARKS
100 -	NPN		RF	EXTERNAL COVERS, PANELS, ETC.	
1	RB1-8158-000		1	TRAY, FEED, SUB, D	
2	RB1-8423-000		1	PLATE, PAPER SUPPORT	
3	RB1-8159-030		1	COVER, REAR, D	
4	RB2-2418-000		1	TRAY, LGL	
5	XA9-0724-000		AR	SCREW, M3X8	
6	RG5-2565-000		1	FRONT COVER ASS'Y	
6A	RB1-8412-000		1	LEVER, CHANGE	
7	RB1-8163-000		1	COVER, LEFT	
8	RG5-3746-030		1	CARTRIDGE COVER ASS'Y	
8A	RG5-3750-000		1	PAPER DELIVERY GUIDE ASS'Y	
8B	RB1-8414-030		1	DUCT	
8C	XA9-0691-000		2	SCREW, SELF TAPPING, M3X8	
8D	RB2-2416-000		1	GUIDE, FACE DOWN DELIVERY	
8E	RB2-2419-000		2	SHEET, FACE DOWN	
8F	RB2-2424-020		1	COVER, CARTRIDGE	
8G	RB1-8413-000		1	TRAY, PAPER DELIVERY, SUB	
8H	RB1-8415-000		1	STOPPER, CRG	
8J	RS5-8708-000		1	LABEL, "WINDOWS"	
9	RG5-2563-050		1	MULTI PURPOSE TRAY ASS'Y	
9A	RB1-8155-000		1	GUIDE, SLIDE, LEFT	
9B	RB1-8156-000		1	GUIDE, SLIDE, RIGHT	
9C	RB2-1705-000		2	RACK	
9D	RB9-0265-000		1	GEAR, 16T	
9E	FA9-2597-000		2	SCREW	
9F	XB4-7300-607		1	SCREW, TAPPING, TRUSS HEAD, M3X6	
10	RB1-8164-030		1	COVER, RIGHT	
11	RB2-2415-000		1	COVER, UPPER	
12	RG5-3756-000		1	MANUAL FEED TRAY ASS'Y	
13	RB1-8171-000		1	COVER, LEVER	
501	XB4-7401-007		2	SCREW, TAPPING, PAN HEAD, M4X10	
502	XB6-7300-807		1	SCREW, TP, M3X8	

# FIGURE 101

## INTERNAL COMPONENTS 1 本体機械内部 (1)

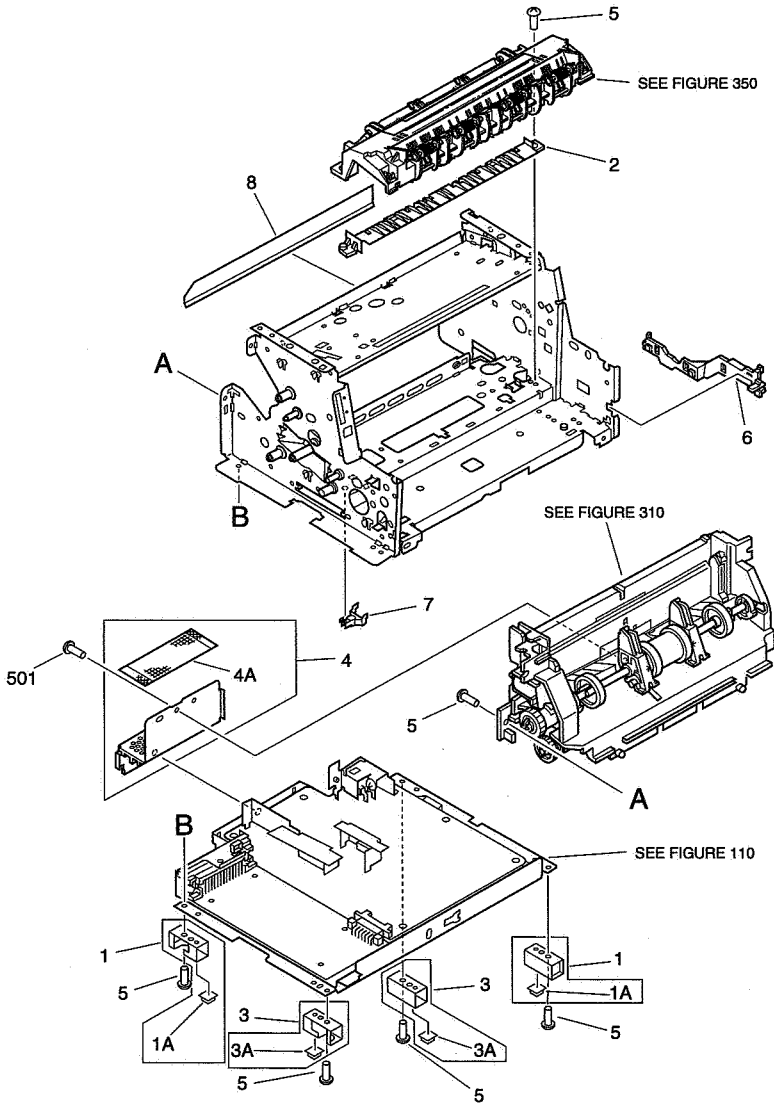


FIGURE & KEY NO.	PART NUMBER	RANK	QTY	DESCRIPTION	SERIAL NUMBER / REMARKS
101 -	NPN		RF	INTERNAL COMPONENTS 1	
1	RF5-1707-000		2	LEG, 1	
1A	RB1-7307-000		1	FOOT	
2	RB1-7247-000		1	GUIDE, PAPER	
3	RF5-1708-000		2	LEG, 2	
3A	RB1-7307-000		1	FOOT	
4	RF5-1509-000		1	PLATE, REINFORCEMENT, CASE	
4A	RB1-7345-000		1	NET	
5	XA9-0724-000		6	SCREW, M3X8	
6	RB1-7130-020		1	GUIDE, CABLE	
7	RB1-7234-000		1	CAP	
8	RB1-7176-000		1	SHEET, GUIDE	
501	XB4-7401-007		3	SCREW,TAPPING,PAN HEAD,M4X10	



FIGURE & KEY NO.	PART NUMBER	RANK	QTY	DESCRIPTION	SERIAL NUMBER / REMARKS
102 -	NPN		RF	INTERNAL COMPONENTS 2	
1	RS5-0798-000		1	GEAR, 15T	
2	RB1-7288-020		2	BUSHING	
3	RB1-8170-000		1	LEVER, RELEASE, D	
4	RB2-1632-000		1	PLATE, GEAR SUPPORT	
5	RB1-7107-000		1	HOLDER, GEAR	
6	RF5-1513-000		1	ARM, SWING	
7	RH7-1320-000		1	MOTOR, DC 12V 24W	
8	RS6-0380-000		1	GEAR, 23T/98T	
9	RS5-0788-000		1	GEAR, 32T/93T	
10	RS5-0789-000		1	GEAR, 37T	
11	RS5-0790-000		1	GEAR, 54T/19T	
12	RS5-0791-000		1	GEAR, 36T	
13	RS5-0793-000		2	GEAR, 22T	
14	RS5-0794-000		1	GEAR, 24T	
15	RS5-0799-000		1	GEAR, 51T/17T	
16	RG5-3453-000		1	SWITCH LEVER ASSY	
17	RF5-2367-000		1	ROLLER, FEEDER	
18	RS5-0797-000		1	GEAR, 18T	
19	RG5-3497-000		1	SCANNER ASSY	
19A	RB1-7384-000		1	SHEET, DUST COVER	
20	RB2-1714-000		1	SPRING, GROUNDING	
21	XA9-0267-000		2	SCREW, TP, M3X6	
22	XA9-0382-000		1	SCREW, TP, M3X12	
23	WE8-5192-000		1	CORE, FERRITE RING	
24	RB9-0227-000		1	SPACER	
25	XA9-0267-000		3	SCREW, TP, M3X6	
501	XB6-7300-807		3	SCREW, TP, M3X8	
502	XB4-7300-809		1	SCREW, TAPPING, TRUSS HEAD, M3X8	

# FIGURE 103

## INTERNAL COMPONENTS 3 本体機械内部 (3)

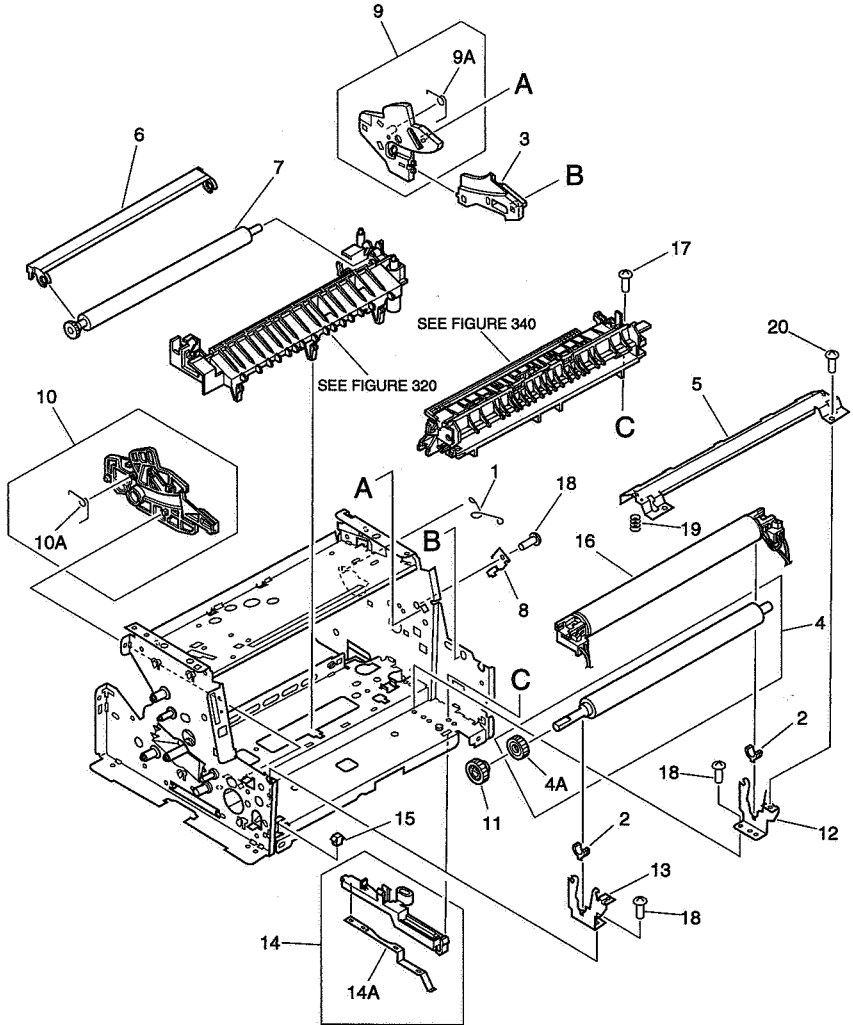


FIGURE & KEY NO.	PART NUMBER	RANK	QTY	DESCRIPTION	SERIAL NUMBER / REMARKS
103 -	NPN		RF	INTERNAL COMPONENTS 3	
1	RB1-7223-000		1	SPRING, GROUNDING	
2	RB1-7246-000		2	BUSHING	
3	RB1-7341-030		1	GUIDE, SUB, CARTRIDGE, RIGHT	
4	RF5-2364-000		1	ROLLER, PRESSURE	
4A	RB2-1668-000		1	RUBBER, CONTINUITY	
5	RF5-1517-020		1	PLATE, PRESSURE	
6	RF5-2358-000		1	GUIDE, TRANSFER	
7	RF5-1534-000		1	ROLLER, TRANSFER	
8	RB1-7129-000		1	SPRING, GROUNDING	
9	RF5-1515-020		1	GUIDE, CARTRIDGE	
9A	RS5-2506-000		1	SPRING, TORSION	
10	RF5-1514-020		1	GUIDE, CARTRIDGE, LEFT	
10A	RS5-2506-000		1	SPRING, TORSION	
11	RS5-0796-000		1	GEAR, 27T	
12	RB1-7256-000		1	SIDE PLATE, RIGHT	
13	RB1-7255-000		1	SIDE PLATE, LEFT	
14	RF5-1533-000		1	PLATE, COMMUNITY	
14A	RB1-7238-000		1	SPRING, LEAF	
15	VS1-5057-002		1	CONNECTOR, 2P	
16	RG5-3459-040		1	FIXING ASS'Y	100-120V
	RG5-3463-000		1	FIXING ASS'Y	220-240V
17	XA9-0824-000		1	SCREW, RS, M3X10	
18	XA9-0686-000		3	SCREW, M3X6	
19	RS5-2508-000		2	SPRING, COMPRESSION	
20	XA9-0724-000		2	SCREW, M3X8	

# FIGURE 110

## ELECTRICAL COMPONENTS ASS'Y 電装部

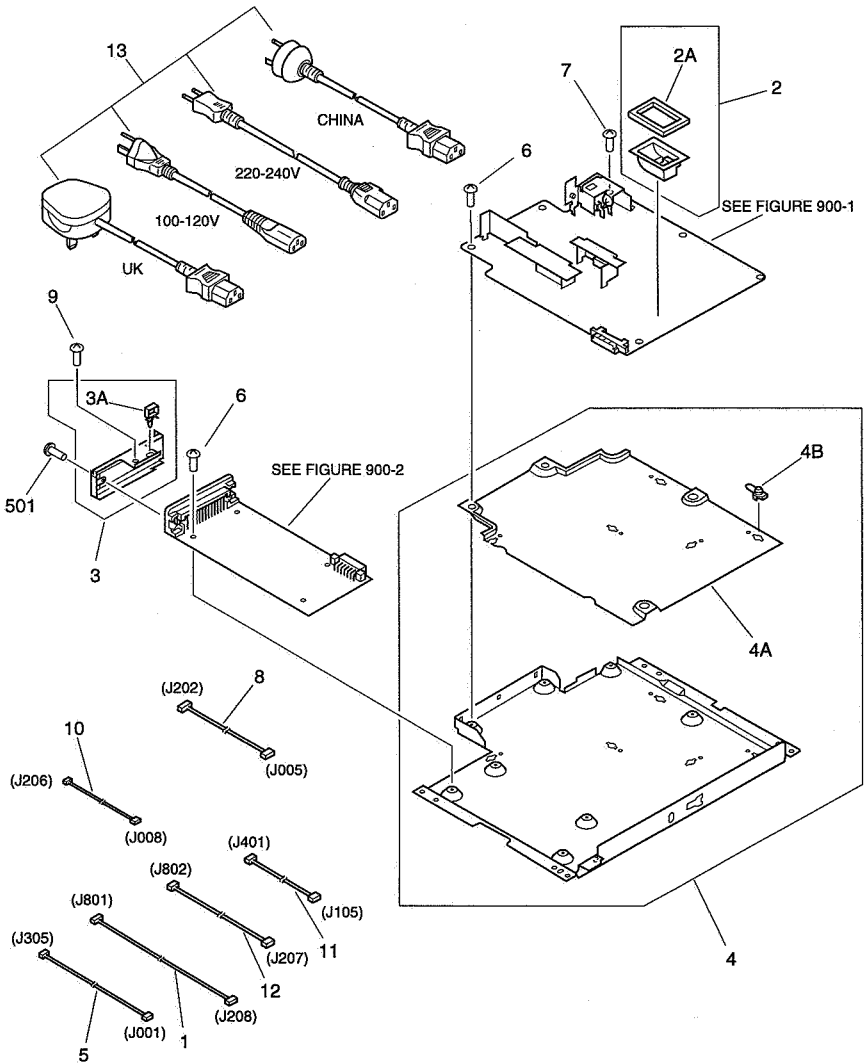


FIGURE & KEY NO.	PART NUMBER	R A N K	Q' T Y	DESCRIPTION	SERIAL NUMBER / REMARKS
110 -	NPN		RF	ELECTRICAL COMPONENTS ASS'Y	
1	RG5-2035-000		1	CABLE, LASER	J208, J801
2	RF5-2382-000		1	COVER, WATERPROOF	
2A	RB1-7270-000		1	CUSHION	
3	RG5-3511-020		1	CONNECTOR SHIELD PLATE ASS'Y	
3A	WT2-0262-000		1	CLIP, CABLE	
4	RG5-2335-000		1	PRINTER CONTROLLER CASE ASS'Y	
4A	RB1-7297-000		1	SHEET, INSULATING	
4B	RB1-7303-000		5	SPACER, PCB	
5	RG5-3662-000		1	DOOR SWITCH CABLE	J001, J305
6	XA9-0890-000		8	SCREW, W/WASHER, M3X6	
7	XA9-0828-000		1	SCREW, W/STAR WASHER, M3X4	
8	RG5-2029-000		1	CABLE, PAPER PICK-UP	J005, J202
9	XA9-0267-000		1	SCREW, TP, M3X6	
10	RG5-2032-000		1	CABLE, THERMISTOR	J008, J206
11	RG5-2033-000		1	CABLE, MOTOR	J105, J401
12	RG5-3661-000		1	SCANNER CABLE	J207, J802
13	RH2-5116-000		1	CORD, POWER	220-240V
	RH2-5127-000		1	CORD, POWER	100-120V
	RH2-5230-000		1	CORD, POWER	UK
	RH2-5344-000		1	CORD, POWER	CHINA
501	XB1-1300-807		2	SCREW, MACH., PAN HEAD, M3X8	

# FIGURE 260

## PAPER PICK-UP ROLLER ASS'Y

給紙ローラ部

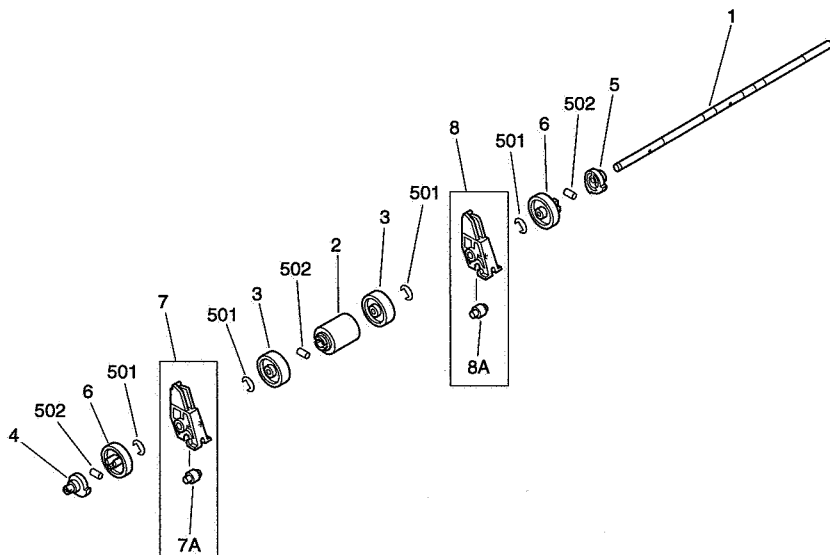


FIGURE & KEY NO.	PART NUMBER	QTY	DESCRIPTION	SERIAL NUMBER / REMARKS
260 -	RG5-3486-040	1	PAPER PICK-UP ROLLER ASS'Y	
1	RB2-1707-000	1	SHAFT, PAPER PICK-UP	
2	RB2-1634-000	1	ROLLER, PAPER PICK-UP	
3	RB2-1633-000	2	ROLLER, SUB	
4	RB1-7193-000	1	CAM, LEFT	
5	RB1-7194-000	1	CAM, RIGHT	
6	RB2-1703-000	2	ROLLER, SUB	
7	RG5-3492-000	1	FEED ROLLER ASS'Y, LEFT	
7A	RB2-1701-000	1	ROLLER, FEED	
8	RG5-3493-000	1	FEED ROLLER ASS'Y, RIGHT	
8A	RB2-1701-000	1	ROLLER, FEED	
501	XD9-0131-000	4	RING, E	
502	XD9-0159-000	3	PIN, DOWEL	

# FIGURE 310

## PAPER PICK-UP ASS'Y

給紙部

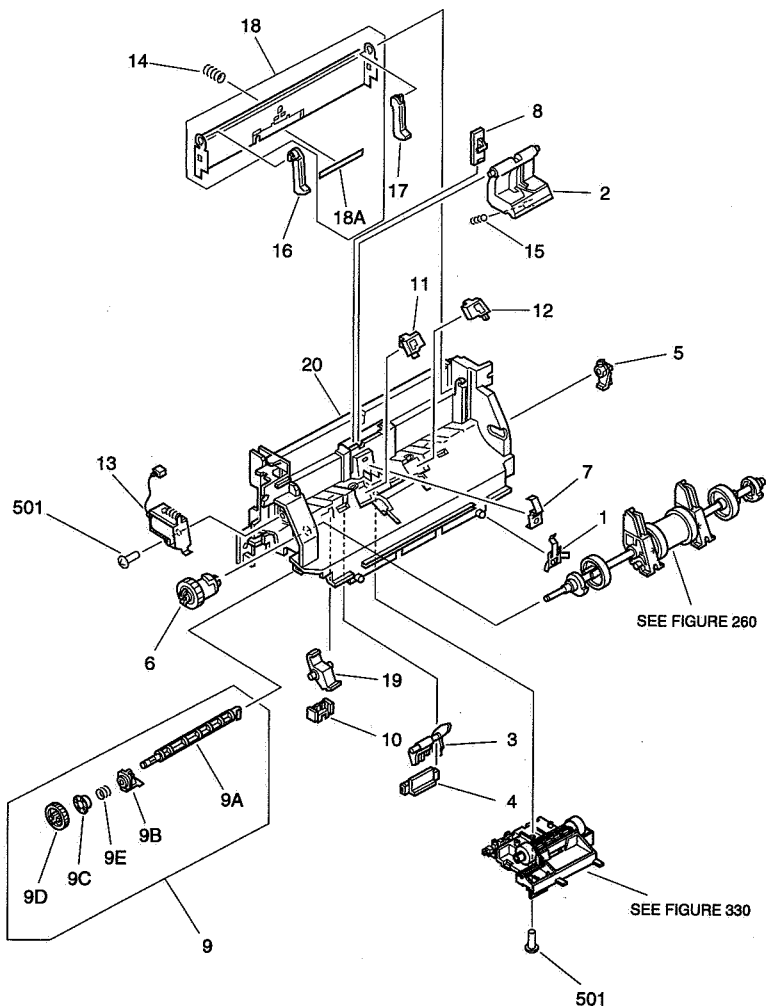


FIGURE & KEY NO.	PART NUMBER	R A N K	Q T Y	DESCRIPTION	SERIAL NUMBER / REMARKS
310 -	RG5-3484-070		1	PAPER PICK-UP ASS'Y	
1	RB1-7172-000		1	SPRING, GROUNDING	
2	RB1-7181-000		1	ARM, SEPARATION	
3	RB1-7182-000		1	LEVER, SENSOR	
4	RB1-7183-000		1	HOLDER, LEVER	
5	RB1-7184-000		1	BUSHING	
6	RB1-7197-020		1	CLUTCH	
7	RB1-7199-000		1	SPRING, GROUNDING	
8	RB1-7206-000		1	HOLDER, ARM	
9	RG5-1947-000		1	FEEDER DRIVE ASSY	
9A	RB1-7221-000		1	SHAFT, DRIVE	
9B	RB1-7222-000		1	BUSHING	
9C	RB1-7224-000		1	RATCHET	
9D	RS5-0786-000		1	GEAR, 24T	
9E	RS5-2510-000		1	SPRING, COMPRESSION	
10	RB1-7220-000		2	HOLDER, STOPPER	
11	RF5-1492-000		1	PAD, LEFT	
12	RF5-1493-000		1	PAD, RIGHT	
13	RH7-5139-030		1	SOLENOID	
14	RS5-2501-000		1	SPRING, COMPRESSION	
15	RS5-2502-000		1	SPRING, COMPRESSION	
16	RB1-7185-000		1	ARM, PLATE, LEFT	
17	RB1-7186-000		1	ARM, PLATE, RIGHT	
18	RF5-2372-000		1	PLATE, MIDDLE	
18A	RB2-1706-000		1	SHEET, SEPARATION	
19	RB1-7219-000		2	STOPPER	
20	RB1-7177-000		1	FRAME, PAPER FEED	
501	XB4-7401-007		2	SCREW,TAPPING,PAN HEAD,M4X10	

# FIGURE 320

## TRANSFER BLOCK ASS'Y 転写ブロック部

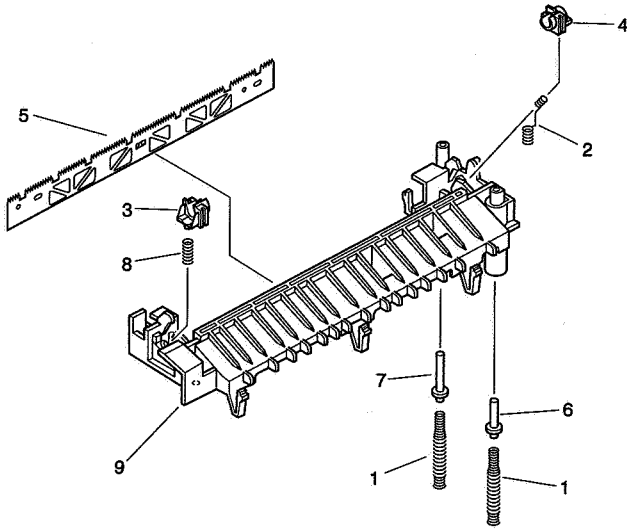


FIGURE & KEY NO.	PART NUMBER	RANK	QTY	DESCRIPTION	SERIAL NUMBER / REMARKS
320 -	RG5-3452-000		1	TRANSFER BLOCK ASS'Y	
1	RS5-2512-000		2	SPRING, COMPRESSION	
2	RS5-2505-000		1	SPRING, COMPRESSION	
3	RB2-1655-000		1	BUSHING	
4	RB2-1656-000		1	BUSHING	
5	RB2-1657-000		1	ELIMINATOR, STATIC CHARGE	
6	RB1-7236-000		1	PIN, CONTACT	
7	RB1-7237-000		1	PIN, CONTACT	
8	RS5-2504-000		1	SPRING, COMPRESSION	
9	RB2-1654-000		1	BLOCK, TRANSFER	
-----					
-----					

# FIGURE 330 FEEDER ASS'Y

搬送部

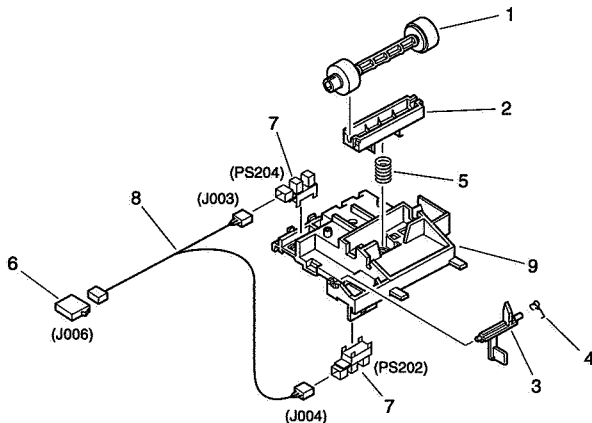


FIGURE & KEY NO.	PART NUMBER	RA X Z Y	Q' T Y	DESCRIPTION	SERIAL NUMBER / REMARKS
330 -	RG5-3485-030		1	FEEDER ASS'Y	
1	RB2-1699-000		1	ROLLER	
2	RB1-7203-000		1	ARM, PRESSURE	
3	RB2-1700-030		1	LEVER, REGISTRATION SENSOR	
4	RB1-7205-000		1	SPRING, TORSION	
5	RS5-2503-000		1	SPRING, COMPRESSION	
6	VS1-5057-006		1	CONNECTOR, 6P	
7	WG8-5362-000		2	IC, TLP1241, PHOTO-INTERRUPTER	PS204, PS202
8	RG9-1946-000		1	PICK-UP SENSOR CABLE 2	J003, J004, J006
9	RB1-7200-030		1	HOLDER	

**FIGURE 340** SEPARATION GUIDE ASS'Y  
分離ガイド部

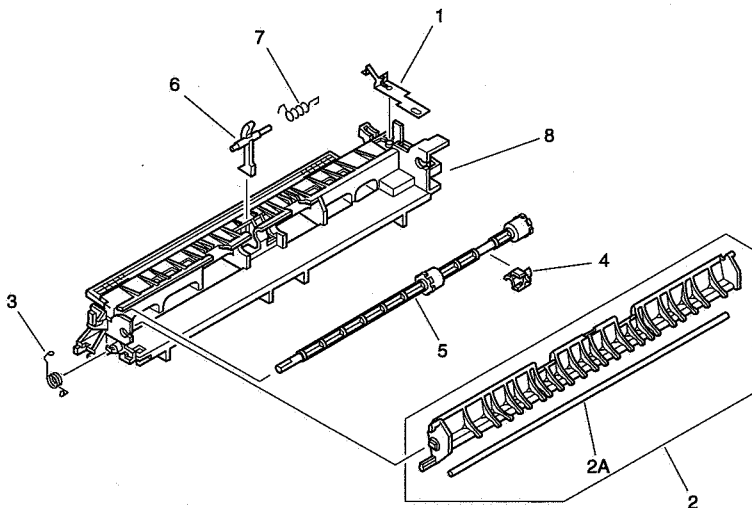


FIGURE & KEY NO.	PART NUMBER	RANK	QTY	DESCRIPTION	SERIAL NUMBER / REMARKS
340 -	RG5-3475-040		1	SEPARATION GUIDE ASS'Y	
1	RB2-1691-000		1	SPRING, LEAF	
2	RG5-3476-030		1	FLAPPER	
2A	RB2-1689-000		1	ROD, REINFORCEMENT	
3	RB1-7277-000		1	SPRING, TORSION	
4	RB2-1690-000		1	BUSHING	
5	RF5-2368-000		1	ROLLER, FACE UP	
6	RB1-7293-020		1	LEVER, SENSOR	
7	RB1-7294-000		1	SPRING, TORSION	
8	RB2-1687-000		1	GUIDE, SEPARATION	
-----					
-----					
-----					

# FIGURE 350 DELIVERY ASS'Y

排紙部

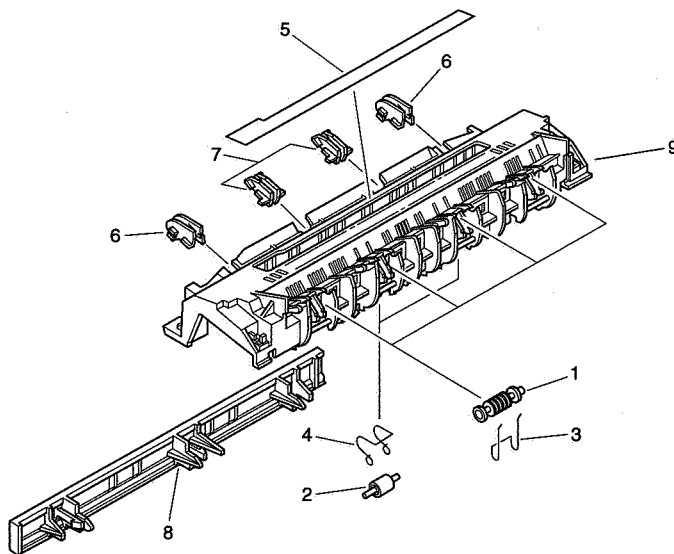


FIGURE & KEY NO.	PART NUMBER	P K Z P	Q' T Y	DESCRIPTION	SERIAL NUMBER / REMARKS
350 -	RG5-3474-020		1	DELIVERY ASS'Y	
1	RB1-7284-020		4	ROLLER, FACE DOWN	
2	RB2-1685-000		2	ROLLER, FACE UP	
3	RB1-7286-000		4	SPRING, WIRE	
4	RB1-7287-000		2	SPRING, WIRE	
5	RS5-8543-020		1	LABEL, "WARNING HIGH TEMP"	
6	RG5-3479-000		2	SPUR ASS'Y	
7	RG5-3478-000		2	SPUR ASS'Y	
8	RB1-7334-000		1	GUIDE, JAMMED PAPER REMOVAL	
9	RB2-1686-000		1	FRAME	

**FIGURE 900** PCB ASS'Y LOCATION DIAGRAM  
回路基板配置図

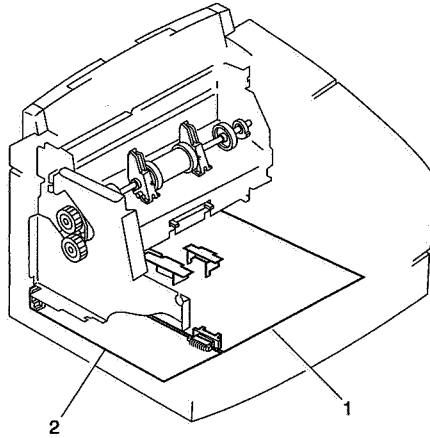


FIGURE & KEY NO.	PART NUMBER	RANK	QTY	DESCRIPTION	SERIAL NUMBER / REMARKS
900 -	NPN		RF	PCB ASS'Y LOCATION DIAGRAM	
	1		1	VIDEO CONTROLLER PCB ASS'Y	R72-5064
			1	VIDEO CONTROLLER PCB ASS'Y	R72-5058, R72-5068, R72-5094
	2		1	PRINTER CONTROLLER PCB ASS'Y	100-120V
			1	PRINTER CONTROLLER PCB ASS'Y	220-240V
-----					
-----					